

# Global Edits in AquaTwin

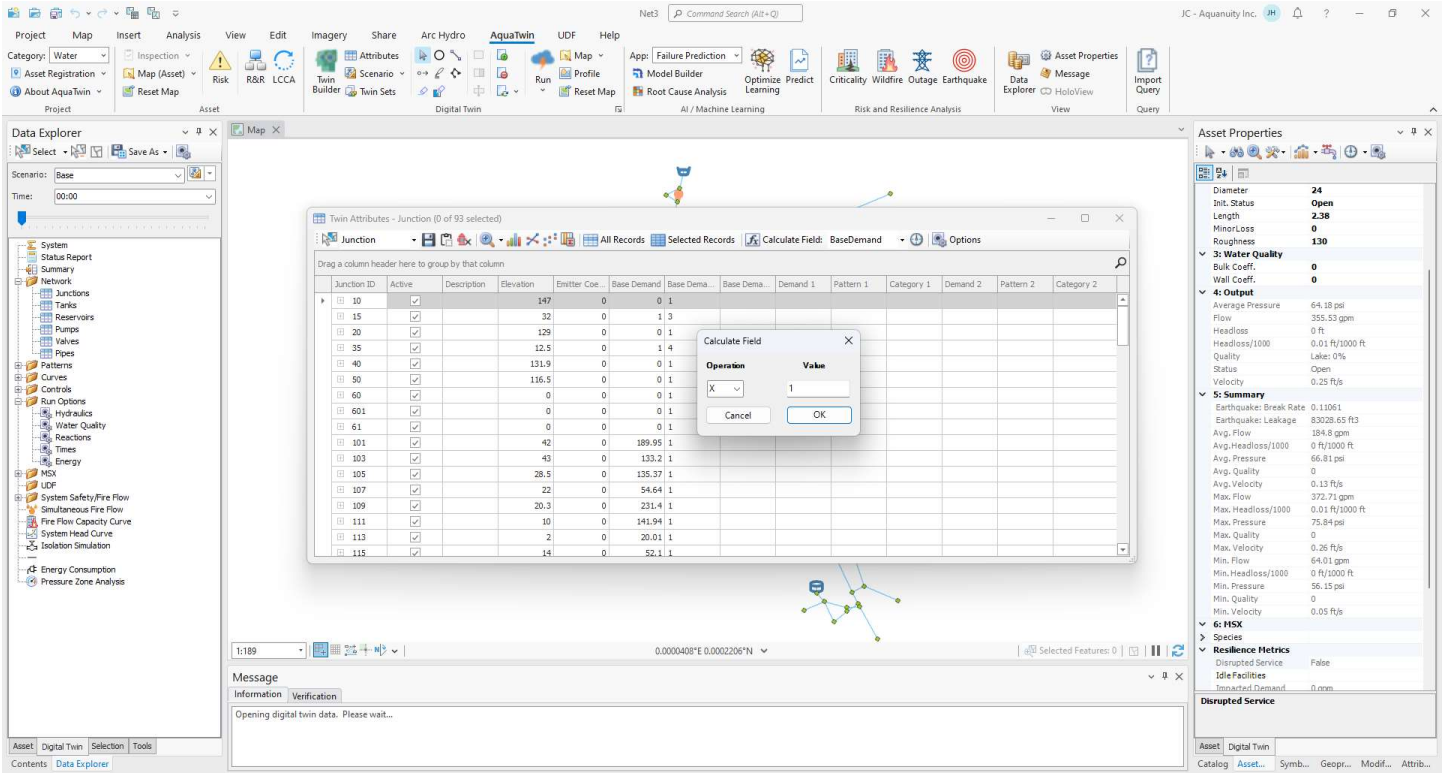


Figure 1: Example of globally editing the demand through the Twin Attribute table.

## Contents

- Global Editing in AquaTwin ..... 2
- Which assets get edited?..... 2
- Asset Properties Tab..... 2
- Twin Attribute Tables..... 2
- Import Center ..... 3

## Global Editing in AquaTwin

---

There are three ways assets' data can be globally changed in AquaTwin. In both cases, the assets currently in an ArcGIS selection will be edited.

- Through the [Digital Twin \(Asset Properties\)](#) tab.
- Through the Twin Attribute tables.
- Through the Import Center.

## Which assets get edited?

---

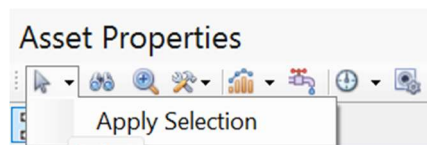
When globally editing assets through the Asset Properties tab and the Twin Attribute tables, only what is currently selected in ArcGIS Pro will get edited.

When globally editing assets through the Import Center, only the currently selected items in ArcGIS Pro from the user's GIS data source (not the AquaTwin assets) will be edited.

## Asset Properties Tab

---

1. Make an ArcGIS selection of the assets to be globally edited.
2. Use the [AquaTwin Selection](#) to select one of the assets (for example if multiple junction are selected, make sure a junction is actively selected in the [Digital Twin \(Asset Properties\)](#) tab).
3. Click *Apply Selection* (**Figure 2**).
4. Any change made in the Asset Properties tab now will be reflected in all selected assets.



**Figure 2:** Click Apply Selection to globally edit selected assets.

## Twin Attribute Tables

---

1. Make an ArcGIS selection of the assets to be globally changed (or make no selection if it is desired for all assets to be changed).
2. Open the *Twin Attribute Table* in the [Digital Twin \(Data Explorer\)](#) tab for the selected assets.
3. Choose the field to be changed from the drop-down menu (**Figure 3**).
4. Choose the operation and value.
5. Click OK to make the changes.

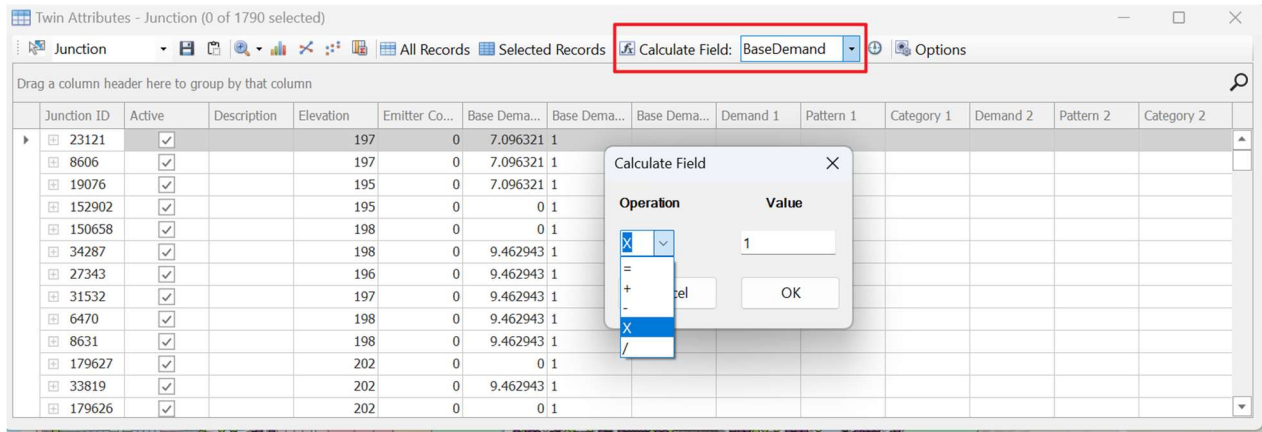


Figure 3: Globally editing assets in a Twin Table.

## Import Center

To update model data from another GIS data source or table, use the Import Center.

1. Load the GIS layer or table into the ArcGIS Contents pane.
2. Open the Import Center
3. In the top right, make sure the Update Existing option is checked (can also update model geometry based on GIS data source geometry).
4. Run the [Import Center](#) to update hydraulic model input data or information fields (**Figure 4**).

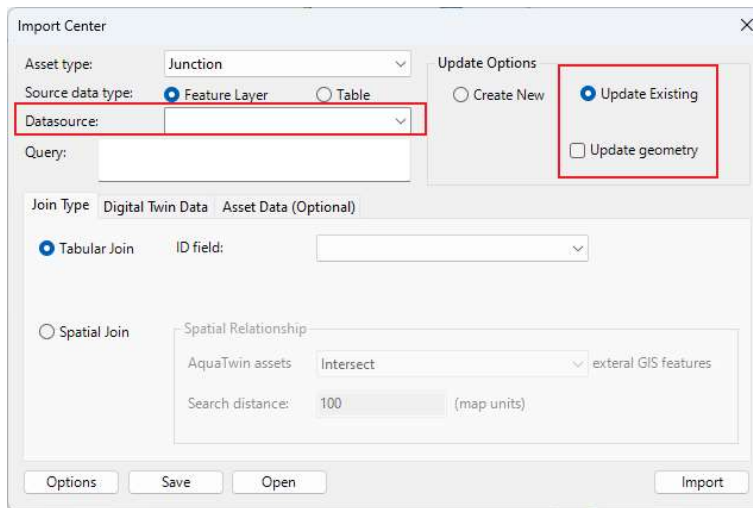


Figure 4: Use the Import Center to globally edit assets from external GIS or tabular data.